



# VENTURI

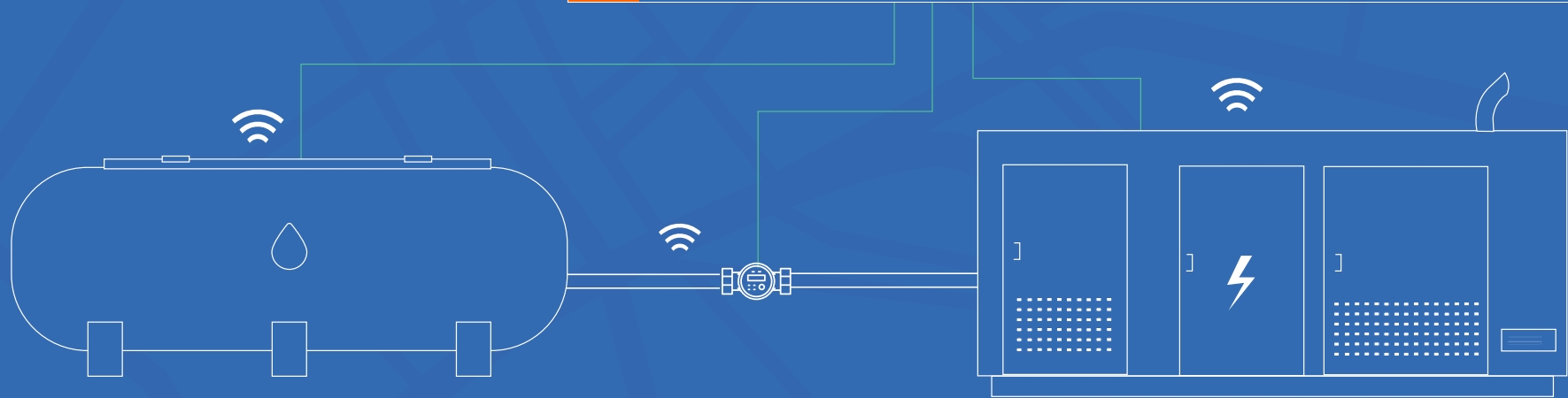
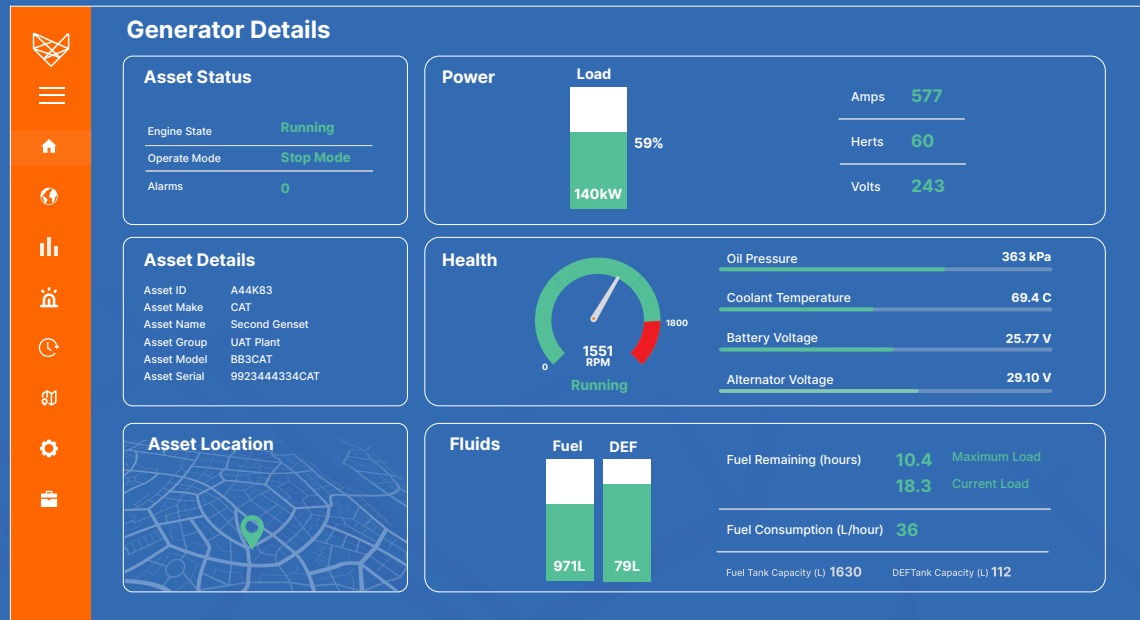
## Generator Monitoring

Venturi provides real-time monitoring, control, and actionable context on the performance of your critical assets. We connect the unconnected to optimise your operations and transform the way you work.

Connect the unconnected

Know the health, readiness, and quality of power produced by all of your generators regardless of manufacturer.

Remotely start/stop, monitor fuel consumption, and schedule fuel deliveries or maintenance using real-time performance and location data.



- Power Quality
- Fuel Management
- Coolant Level & Temperature
- Running Hours & On/Off Status
- Battery Voltage
- Generator Location
- Engine Temperature & RPM
- All Generator Brands

## Generator Monitoring Features



**Generator Health Dashboard** > Generator-specific dashboard incorporating operating parameters (RPM, Load, Voltage, Current, Fuel Level, Battery Voltage, etc.)



**Multi-Site Support** > View multiple sites and all assets located within them in a simple traffic light view



**Map View** > View the overall health of all your sites on a satellite map and quickly zoom in on regions, states, cities or specific assets



**Data visualisation** > Generate graphs to analyse and optimise performance by comparing historical data points



**Reporting** > Report granular metrics for a single location or many (e.g. current fuel level, when maintenance is due, how many times an asset has been started, or the last time it was refuelled)



**Alarms / Alerts (SMS + Email)** > Automated and user-configurable alerts for generator metrics (low fuel or battery, overheating, fluid pressures, and more)



**Fuel Management** > Monitor additional tanks and receive insights about fuel consumption. Receive notification if theft is detected (extra hardware required for external tanks)



**Monthly Analysis** > Receive a monthly report detailing asset activity, health and fuel consumption. Reports highlight concerning data insights and recommend required inspection and maintenance



**Vendor Agnostic Solution** > Monitor and manage all your generators, regardless of manufacturer using Venturi's asset management platform

## Our Platform



Venturi Asset Management Platform

Provides a single pane of glass view across fleets, facilities, and geographies.

Tracks the location of essential business assets, their readiness and system health.

Allows you to remotely control equipment, fuel, fleets, facilities and more.

## Our People



Generator Start/Stop, Engine Health and Power Monitoring Install

Are based in country, ensuring you have highly-trained local support when it's needed and superior installation quality.

Understand that IoT solutions must be secure, but also reliable and affordable.

Deploy best-of-breed automated control systems to protect your energy generation facilities, fleets, workshops, fluid management infrastructure and people.

## Our Hardware



VFG 500 Industrial Field Gateway

Has been designed to withstand the rigours of industrial worksites.

Our proprietary Industrial Field Gateway allows almost any machine, sensor, or management system to be connected, tracked, controlled, and located in real time.

Cellular-Enabled Connected Devices provide rapid and reliable scalability for visibility and control of building access, power outages, tank levels, fleet locations and system health.



Connect the unconnected

---

Phone: +61 7 3187 8000

Email: [sales@venturi.io](mailto:sales@venturi.io)

Web: [www.venturi.io](http://www.venturi.io)

#### **Australia**

Venturi Technology Aus Pty Ltd  
1/210 Queensport Road North  
Murarrie, QLD, 4172

#### **Papua New Guinea**

Venturi Technology PNG Limited  
Napa Napa Road, Motukea  
Port Moresby, NCD

---